

HOLKHAM

THE BIG EXPLORE

Explore Holkham Park and use your senses to learn more about the creatures, plants and history that can be found here.

Can you see?

Wood pile

We leave fallen trees and branches around the park for our minibeasts to live in.



Fallow Deer

Over 400 fallow deer live here in Holkham Park. Can you catch a glimpse of them?



The Monument

A big statue built nearly 200 years ago, that reaches high to the sky.



Grey Squirrel

Can you spot a grey squirrel searching for nuts to eat?



Can you hear?

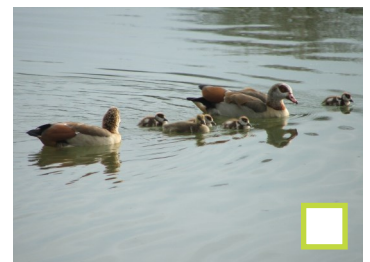
Bird song

Many types of bird live in Holkham Park. How many different bird calls can you hear?



Quack

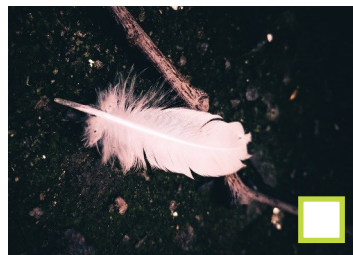
Say hello to the ducks and geese on the lake. Are they quacking or honking back at you?



Can you find?

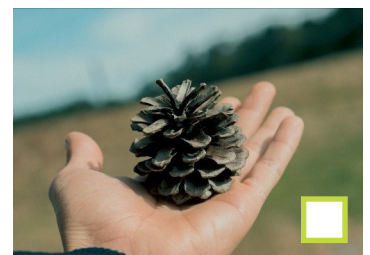
Feather

Can you find a stray feather on the ground? Which bird do you think it belongs to?



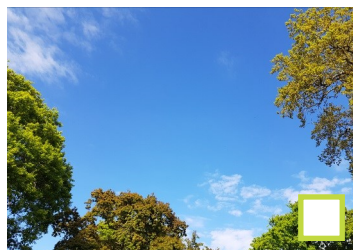
Pinecone

Has it just fallen from a tree or has it been nibbled by a squirrel?



Quiet Place

Somewhere peaceful to sit still for a few moments and look up at the sky.



Footprints

The prints of mammals, birds and other visitors - where do they lead?

